

22

23

24

NOVEMBER

2019

PZ GALLERY, 7 COINAGEHALL STREET, PENZANCE TR18 4AY (OPPOSITE JUBILEE LIDO)  
FREE PARKING CLOSE BY AND IN CP AFTER 16:00.

@xvi\_artists

XVI ARTISTS FROM THE NEWLYN SCHOOL OF ART MENTORING PROGRAMME 2019

**OPENING NIGHT**

FRIDAY 22 NOVEMBER, 18:00 - 22:00

**DAILY**

FRIDAY 22 NOVEMBER, 12:00 - 22:00

SATURDAY 23 NOVEMBER, 10:00 - 18:00

SUNDAY 24 NOVEMBER, 10:00 - 16:00

NEWLYN  
SCHOOL  
OF ART



**Michael Angove**  
[www.angove.me](http://www.angove.me)  
 @michaelangove\_fineartist



**Rod Ashman**  
[artrod@me.com](mailto:artrod@me.com)  
 @Rodashman



**Beverley Bailey**  
[beverleya.bailey@btinternet.com](mailto:beverleya.bailey@btinternet.com)  
 @bailey\_studio\_art\_



**Mike Boyer**  
[www.mikeboyerart.com](http://www.mikeboyerart.com)  
 @mikeboyerart



**Jeni Calvert**  
[www.jenicalvert.com](http://www.jenicalvert.com)  
 @jenicalvertart



**Tony Donaghy**  
[antonmacd@googlemail.com](mailto:antonmacd@googlemail.com)  
 @antonmacd



**Ron Ford**  
[www.ronford.co.uk](http://www.ronford.co.uk)  
 @ron.ford



**Jo Gorman**  
[jowoodgorman@gmail.com](mailto:jowoodgorman@gmail.com)  
 @jo90go



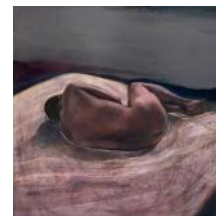
**Richard Gregory**  
[www.richardgregoryfineart.com](http://www.richardgregoryfineart.com)  
 @richardgregoryfineart



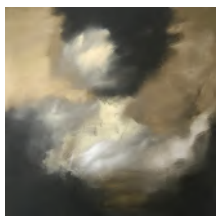
**Jane Hodgson**  
[www.janehodgson.co.uk](http://www.janehodgson.co.uk)  
 @janehodgsonartist



**Nicky Huxham**  
[www.nickyhuxham.com](http://www.nickyhuxham.com)  
 @NickyHuxham\_Artist



**Jane Pine**  
[www.janepine.com](http://www.janepine.com)  
 @janepine\_artist



**Rachel Redfern**  
[www.rachelredfern.com](http://www.rachelredfern.com)  
 @rachel\_redfern



**Katherine Sheers**  
[www.katherinesheers.com](http://www.katherinesheers.com)  
 @katherinesheers



**Charlotte Turner**  
[www.charlotteturnerartist.com](http://www.charlotteturnerartist.com)  
 @charlotteturnerartist

@xvi\_artists

XVI ARTISTS FROM THE NEWLYN SCHOOL OF ART MENTORING PROGRAMME 2019

NEWLYN  
SCHOOL  
OF ART

## The Perfume of Paint, the Glow of Dialogues

It's rare to see a group show that delivers so much unbridled energy, risk and teamwork. Into the depths of winter they will transform the stern concrete of the car showroom into a vividly sensual laboratory. 16 artists all with their own obsessive projects. From a reconstructed studio that appears like a tardis from another world to the mapped lines of a family tree that gave birth to the venue. Alongside a gathering of their studies and research and even a collaborative apothecary its seems camaraderie permeates the show. Six degrees of separation is more like 100 degrees of fellowship.

Amidst a shocking riot of colour this intoxicating show will be of interest to artists, designers, educators and students of all persuasions and an event for all the public to remember.

Jesse Leroy Smith, Mentor

# @xvi\_artists

NEWLYN  
SCHOOL  
OF ART

## XVI ARTISTS FROM THE NEWLYN SCHOOL OF ART MENTORING PROGRAMME 2019



**Michael Angove**  
www.angove.me  
@michaelangove\_fineartist

The nebulous area between painting and drawing is where you will find Michael's work. His paintings begin with the reconstruction of the canvas, he then moves into the deconstruction of drawing. Ambivalent lines, scarce areas of form and fine details coalesce into anthropomorphic textures and spaces.



**Rod Ashman**  
www.artrod@me.com  
@Rodashman

Rod's work is firmly fixed in his Black Country roots with his childhood memories of the forge in his grandfather's garden workshop with the sounds and smells of the heavy industry from the iron works in the background. Canals, scrapyards and fenced off depots were all Rod's play grounds offering up the visual jewels that have inspired his current collection of paintings - the raw and rugged juxtaposed with the sensitive and poetic.



**Beverley Bailey**  
beverleya.bailey@btinternet.com  
@bailey\_studio\_art\_

Fascinated by the contradictions of place and time, Beverley's work is drawn from a wide range of visual sources and encounters often found in unexpected places. Through drawing and painting, she records these fleeting moments which are developed until they become heightened with her idiosyncratic view, a distillation from the original source. Although influenced by the pioneers of modernism, curiosity plays an important role in Beverley's work - she questions and uncovers the unexpected. Bold and energetic, the result is a sense of otherness and allusion with immediate sensation.



**Mike Boyer**  
www.mikeboyerart.com  
@mikeboyerart

Mikes work is an evocative act of communication. His paintings exist in realms of half remembered states, dreamlike; fragmented and puzzling. These curious parallel worlds have an uncanny, mercurial quality and in their intention to capture some fleeting moment they become an echo of what has passed and a promise of what is to come. They are stories of choice and transition. Playing with the idea that life and artistic creation are unfinished, initial ghostlike traces sit next to denser detailed layers. The painting process begins to mirror and give form to the experience of memory, imagination and being alive.



**Jeni Calvert**  
www.jenicavert.com  
@jenicavertart

Jeni brings a voice to the canvas surface of inner feminine battles. Using paint and collage she skilfully plays with the fine line of assumption whilst revealing the darker side of consumption and imbalance. What glitters is not always gold, even the ugly raw truth has an undeniable beauty. It's not about the flowers



**Tony Donaghy**  
antonmacd@googlemail.com  
@antonmacd

Tony paints and draws. He was born into a bardic tradition, so place, people, music and story are central to him as an artist. Water fascinates him. Poetry, literature and film spark his imagination and drive his work. Intuitive mark making is balanced with thoughtful experience as the process of arriving at a final image constantly shifts between the known familiar world and the elusive dream.



**Ron Ford**  
www.ronford.co.uk  
@ron.ford

Ron is a contemporary visual artist who combines conceptual and traditional approaches. Often working at the boundary of abstraction and figuration, he creates a detachment from the material world, giving the viewer freedom to respond emotionally to his ambiguous narrative spaces. He allows meaning to unfold through immersive research, intuitive use of materials, and social engagement. His work weaves together threads of concern for the fragile uncertainty of life, the importance of place and the nature of time. Work that is more than the simple pleasure of looking.



**Jo Gorman**  
jowoodgorman@gmail.com  
@jo90go

Rich with empathy and visceral intensity Jo's work perpetually searches for material form. Works are rarely finished but merely pause in a suspended state in an ongoing evolutionary process. They are disgorged from the smallest of studio spaces, raw, emotional and unapologetic.



**Richard Gregory**  
www.richardgregoryfineart.com  
@richardgregoryfineart

It is the meditative qualities of water that informs Richard's large-scale paintings and silk screen prints. From the hidden ditches of his childhood in suburban London, to intense observations involved in fly fishing and surfing. Richard works with patterns and marks that are both precise and irregular, playing with frequency and resolution, to create work in which you can be lost, for a moment, between specific observation and universal perception.



**Jane Hodgson**  
www.janehodgson.co.uk  
@janehodgsonartist

Jane's paintings express a strong sense of physical energy, using colour, light and surface to describe the natural world - her feelings of being part of it rather than a literal representation. She paints with fluid marks and bold brushstrokes, using oil and metal powders on an organic film. This material is fully degradable, meaning that Jane's work will change over time - just as our planet does. She aims to offer something beautiful in her paintings as an antidote to our unstable world.



**Nicky Huxham**  
www.nickyhuxham.com  
@NickyHuxham\_Artist

Having a connection and an empathy with my subject is what matters the most, whether it's a bird I'm painting or a portrait. Painting is my safe place, where I can best make sense of the world around me and my life experiences. Here I don't need to hide my feelings or to try and please anyone. I paint in a way that shows honesty in my subject; to paint both what I see and what I feel.



**Jane Pine**  
www.janepine.com  
@jane\_pine\_artist

Jane's figurative paintings reveal a sense of men's complex nature with strength balanced against an internal vulnerability and fragility. Her work is embedded in emotions evoked by a family story dating back to the First World War that makes a connection with the life and literary work of TE Lawrence. Jane brings together the experiences of loss, gender identity, courage and notoriety, to draw the viewer into a subtle narrative of survival from adversity. A long term interest in the human psyche, together with her own personal experience has inspired work that is sensitive, yet powerful, quiet, yet screaming.



**Rachel Redfern**  
www.rachelredfern.com  
@rachel\_redfern

Rachel seeks a connection with the truth of the human condition by observing the light and dark in nature. She turns to beauty to reveal this contrast, allowing the alchemy of paint to guide a desire for simplicity and honesty. "Beauty is truth's smile when she beholds her own face in a perfect mirror." Rabindranath Tagore



**Katherine Sheers**  
www.katherinesheers.com  
@katherinesheers

Katherine paints the absent body; corporeal echos that trace the displacement of the body from ordinary life, whether through trauma or transcendence. In doing so, she offers us an intimate view of our fragile existence within flesh. Her paintings express a joyous vulnerability and serious pleasure. Constructed through a sensual, choreographed movement of marks and stains, they hint at the sanguineous flower, the unwrapped wounds of the ballet dancer or the pulsing tenderness that can only come from motherhood.



**Charlotte Turner**  
www.charlotteturnerartist.com  
@charlotteturnerartist

Working in a meditative way Charlotte strips back layers of paint to reveal memories of marks made. Like times past, like the way pebbles are eroded with the washing of the tide. The sea is her vehicle for self change, childhood memories rediscovered through adult eyes are honoured beautifully in monochrome tones. Just enough detail that requires a closer look, stories allowed to surface like dreams as you wake.

22 23 24 NOVEMBER 2019